



MaX UC Desktop

Installation Guide

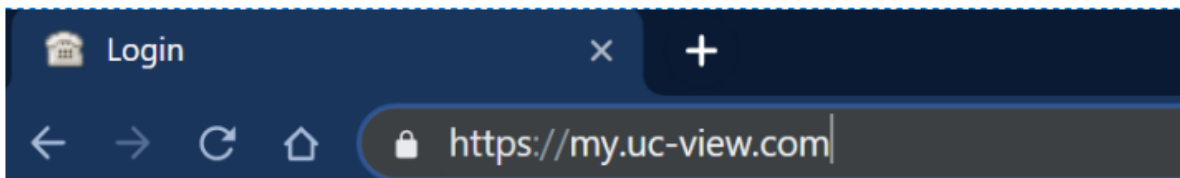
Updated Version 05.04.20

Please Note: The screen shots presented in this document are native to Windows operating systems. The Mac OS process is similar but may look slightly different and action buttons may not appear in the same locations.

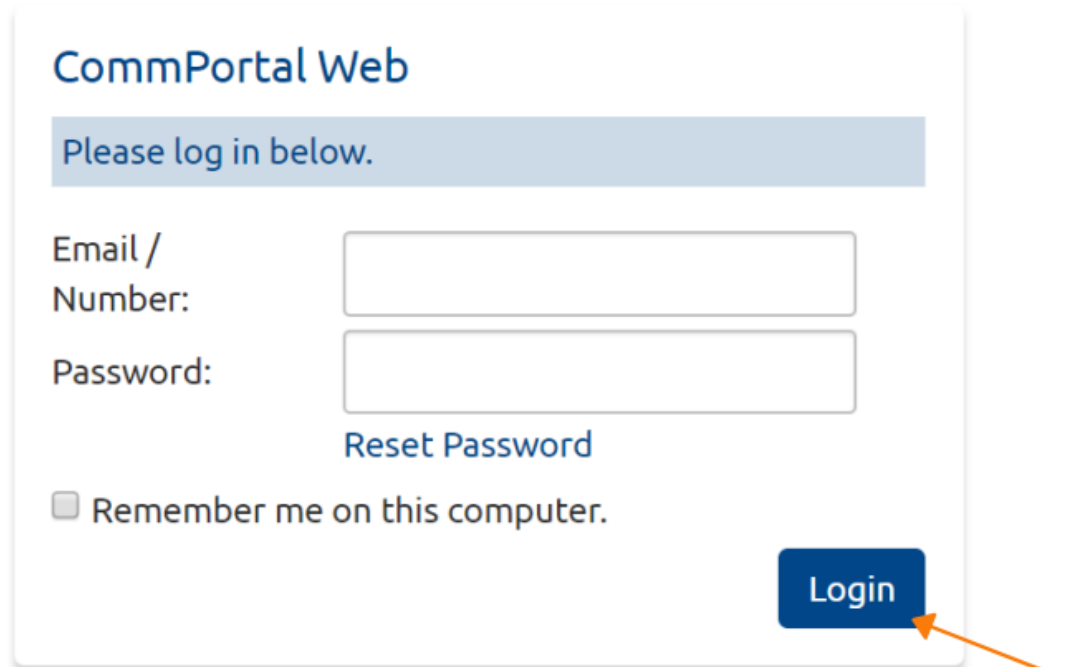
To download MaX UC Desktop App, simply follow the steps outlined below:

INSTALLATION STEPS

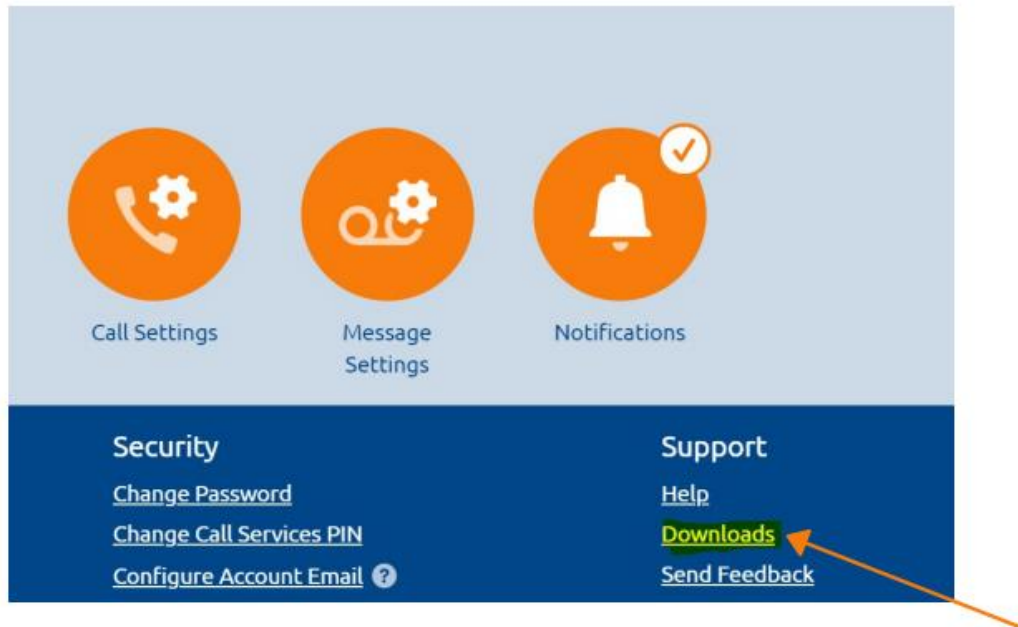
1. Open CommPortal: Navigate to **https://my.uc-view.com** from any web browser



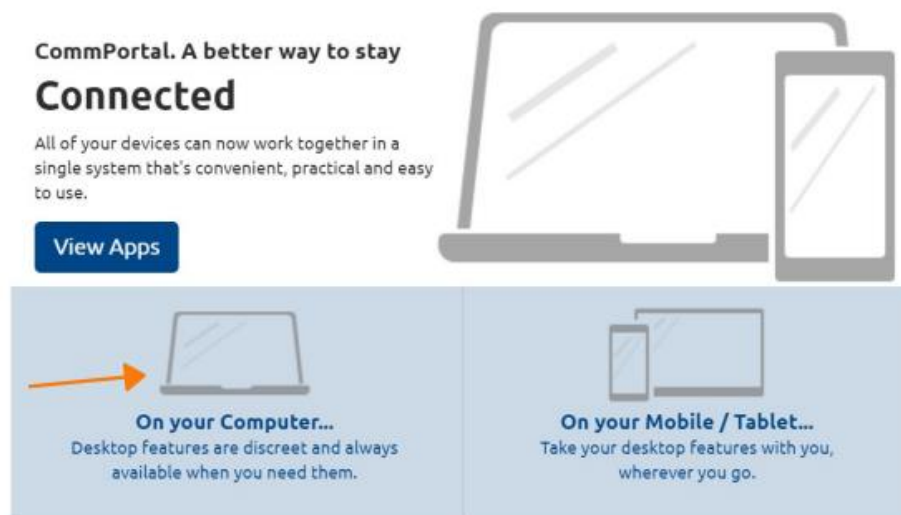
2. Login using your 10-digit phone number and CommPortal password. Please contact your administrator or call us at 800-860-2934 if you have issues logging in

A screenshot of the "CommPortal Web" login page. The page has a light blue header with the text "CommPortal Web". Below the header is a light blue box with the text "Please log in below.". The login form consists of two input fields: "Email / Number:" and "Password:". Below the "Password:" field is a link that says "Reset Password". At the bottom left of the form is a checkbox labeled "Remember me on this computer.". At the bottom right of the form is a blue button labeled "Login". An orange arrow points to the "Login" button.

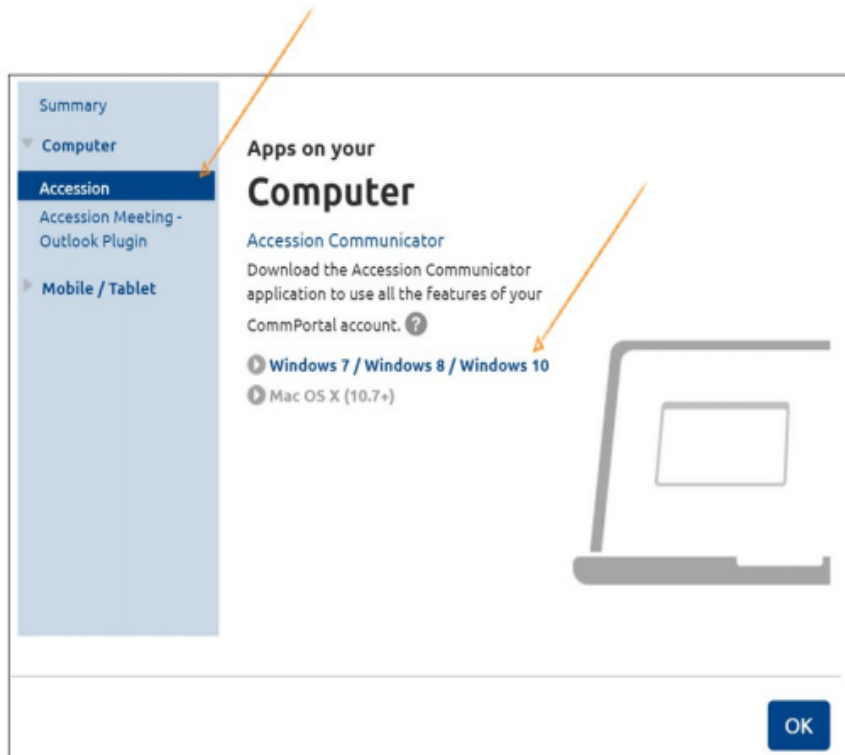
3. Once logged in, click 'Downloads' on the bottom right hand corner



4. A new window pops up as shown below. Please click 'On your Computer'



5. Select the "Accession" application, then click the highlighted link for the appropriate PC operating system software to start the download



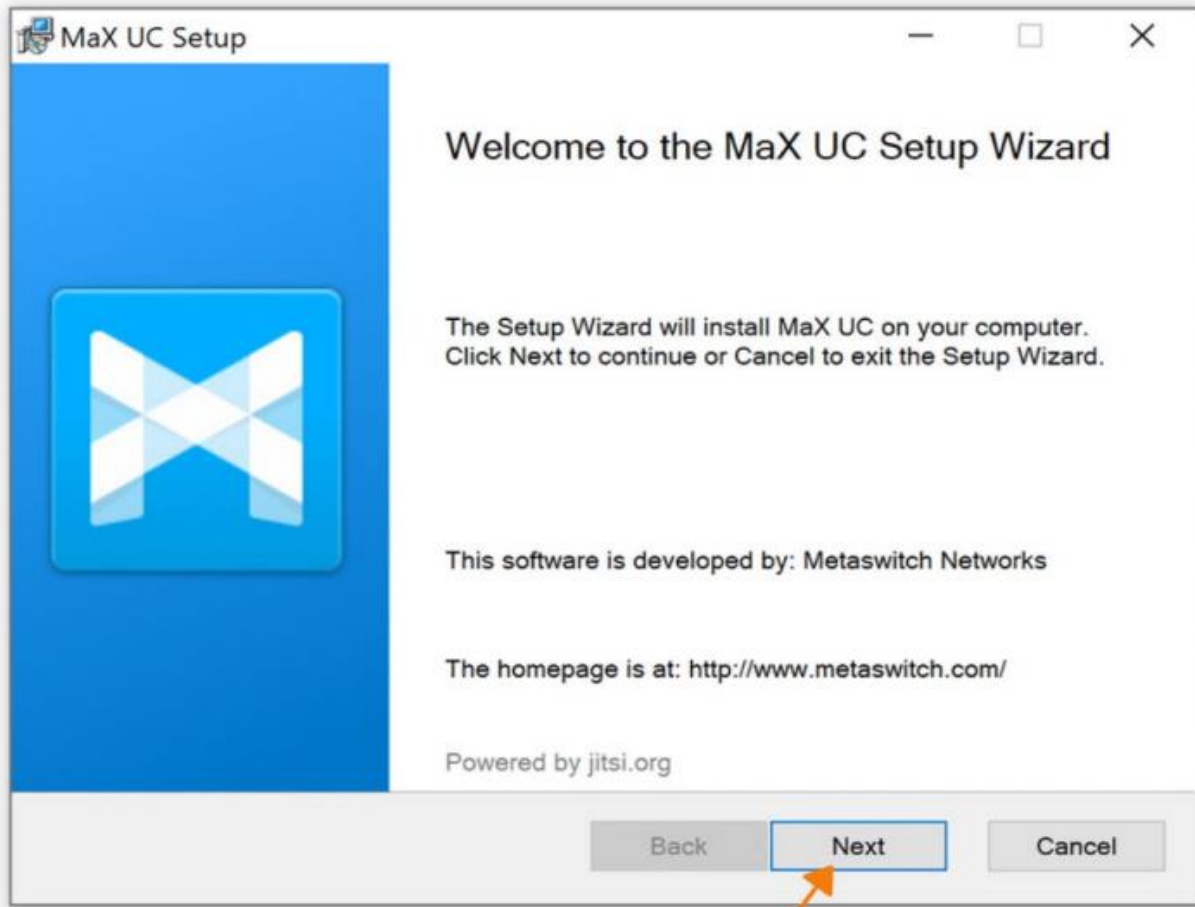
6. Your computer may perform a security check prior to downloading and present a Window with a security warning. The appearance of these boxes will depend upon the browser and PC operating system (OS) you are using. Click 'Save' if asked (Note - Steps may vary based on web browser used)



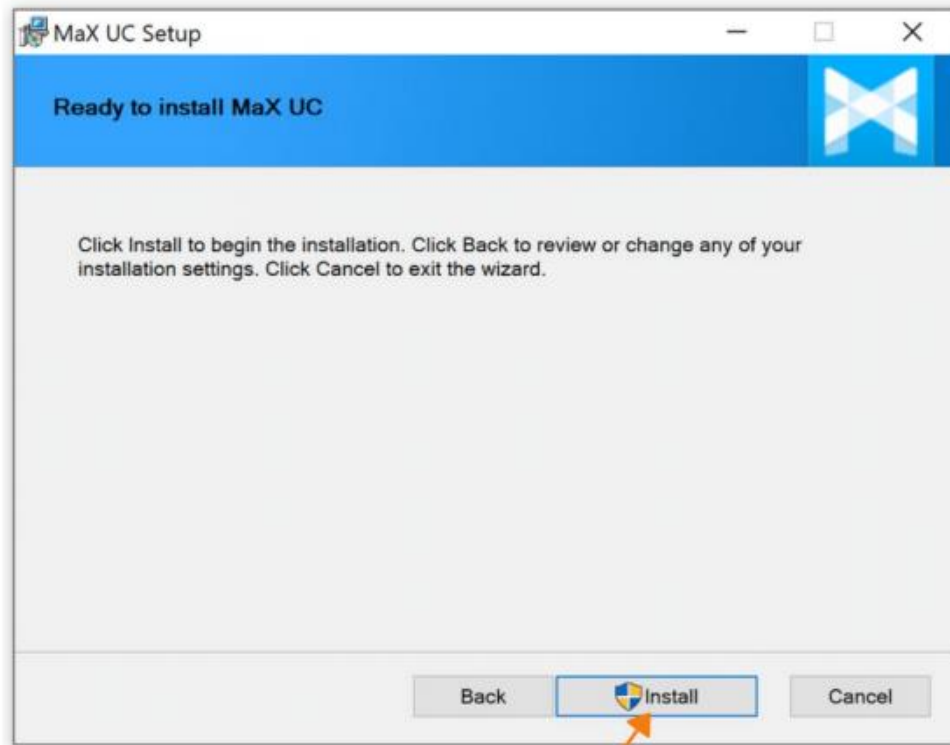
7. An executable installation file will be downloaded for you to run. Click on the file to install



8. Next, you will see a setup window as shown below. Click 'Next' until you see "Install" button



9. Click 'Install'. Your company firewall may block the installation and ask for admin login/password. If asked for admin password, please contact your local network administrator



10. Click 'Finish' setup and a new window pops up. Click 'Log in Manually' to proceed

